

BAOT Stain Paste

Product Manual

M A K E I T S I M P L E & E S T H E T I C

BAOT[®]

Pink



Why choose BAOT Pink Stain System?

User Friendly

The shade configuration of the BAOT stain paste is reasonable. The system composition is easy to understand, and you can get started quickly after simple training.

Impressive Aesthetic

BAOT stain paste has a strict ratio. Each color corresponds to different parts, such as mucosa, tissue vessels, gingival tissue, etc.





Product Introduction



EFFORTLESSLY · USER FRIENDLY · IMPRESSIVE ESTHETIC



PINK

STAIN / GINGIVA / GLAZE

The Pink kit is designed to meet the need for high-quality gum restoration, which can simply be used in any all-ceramic framework. One set can meet all you need.



PRODUCT LIST

This kit provides 14 kinds of gingiva colors to meet the need for different gum restoration. You can simply achieve impressive aesthetic restoration in a short time with the use of the stain paste, structure for gingiva, and shade matcher.

STAIN	Melon	Puce	Mauve	Lava	Marine Blue	Old Rose
	Otter Brown	Ruddy Pink	Tango Pink	Almond	African Violet	
GINGIVA	Melon	Tea Rose	Jasper			
GLAZE	Glaze					
LIQUID	Glaze Liquid		Structure Liquid			
ACCESSORY	#0 Pink Bursh		Pink 14 Shade Matcher			



COLOR DISPLAY

Translucent



Mauve



Almond



Marine Blue

High Opacity



Melon



Ruddy Pink



Tango Pink



Lava



African Violet



Old Rose



Otter Brown



Puce

Structure



Melon



Tea Rose



Jasper

PHYSICAL DATA

	Standard	Specification	Values
Coefficient of thermal expansion (25-475°C)[$\cdot 10^{-6} \cdot K^{-1} \pm 0.5$]	EN ISO 6872	9.5	9.5
Transformation temperature Tg [°C ± 20]	EN ISO 6872	495	495
Bending strength [MPa]	EN ISO 6872	≥ 50	140-150
Solubility [$\mu\text{g}/\text{cm}^2$]	EN ISO 6872	< 100	20-30

FIRING CHART

Start temperature [°C]	Dry-on time [min]	Closing time [min]	Heating rate [°C/min]	Vacuum start [°C]	Final temperature (Vacuum end) [°C]	Holding time (Without vacuum) [min]
400	3	4	45	670	770	1

*Please note before firing

- 1.Our recommendation for firing temperature is based on numerous tests.
- 2.The firing parameters may vary depending on different types of furnaces.
- 3.It is recommended to test before production.



LAYERED SIMULATION TECHNIQUE



01 Sandblast the structure with aluminum oxide at no more than 1.5-2 bar pressure, steam clean, then dry it well.



02 The teeth are characterized by Aurora stain paste and sinter at 710°C.

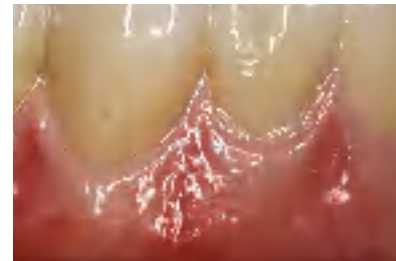


03 In the deeper parts, apply Lava and Tango Pink in the concavities to generate an intense and dark tone. Then sinter at 710°C.



- 04** Use a mixture of Mauve and Tango Pink and a mixture of Melon and African Violet to coat the alveolar prominence area alternately to achieve marginal gingiva and attached gingiva. Use structure to mimic the orange peel characteristic of the adhered area and use structure Melon to coat the area of free or marginal gingiva. Then sinter at 770°C.

DETAILS DISPLAY





Aurora Stain/Structure/Glaze Product List

Translucent

Mauve 4g

Almond 4g

Marine Blue 4g

Structure

Melon 4g

Tea Rose 4g

Jasper 4g

High Opacity

Melon 4g

Ruddy Pink 4g

Tango Pink 4g

Lava 4g

African Violet 4g

Old Rose 4g

Otter Brown 4g

Puce 4g

Glaze

Glaze 4g

Liquid

Glaze Liquid 25ml

Structure Liquid 25ml

Accessory

#0 Pink Brush 1 branch

Pink 14 Shade Matcher 1 slice

NOTES

1. Please stir the paste to make sure that the paste and suspension are fully mixed before staining.
2. It is not recommended to add the liquid directly into the paste bottle.
3. The paste must not come into contact with water.
4. Always use a clean, dry brush.
5. Please carefully check the purity and cleanliness of the brush or spatula as any external contamination will adversely affect the final result.
6. The sintering parameters provided in this manual are only reference values.
7. Structure contains porcelain, which will increase a little thickness after sintering and can be used to increase the occlusal contact area, adjacent surface and incisal length.
8. It is not recommended to add liquid directly to the paste and stir, it is recommended to mix it on a palette. Please make sure the paste is thoroughly mixed to the right consistency.

***Storage conditions** Dry storage at +12°C to +38°C

